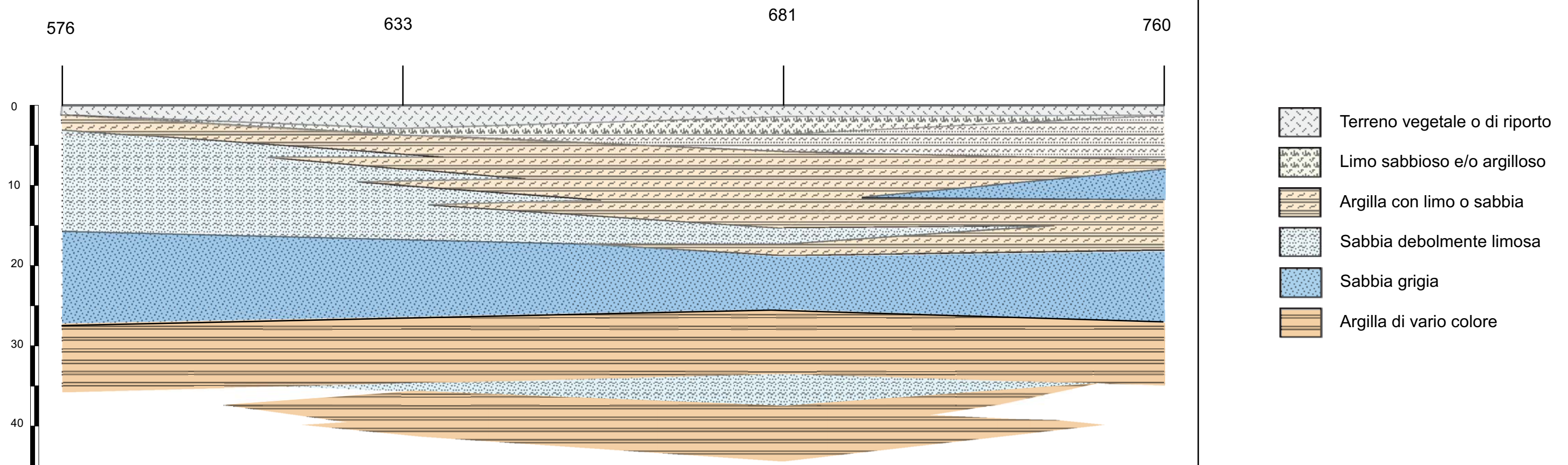


## **SEZIONI LITOTECNICHE**

SEZIONE STRATIGRAFICA INTERPRETATIVA

TRACCIA A-A

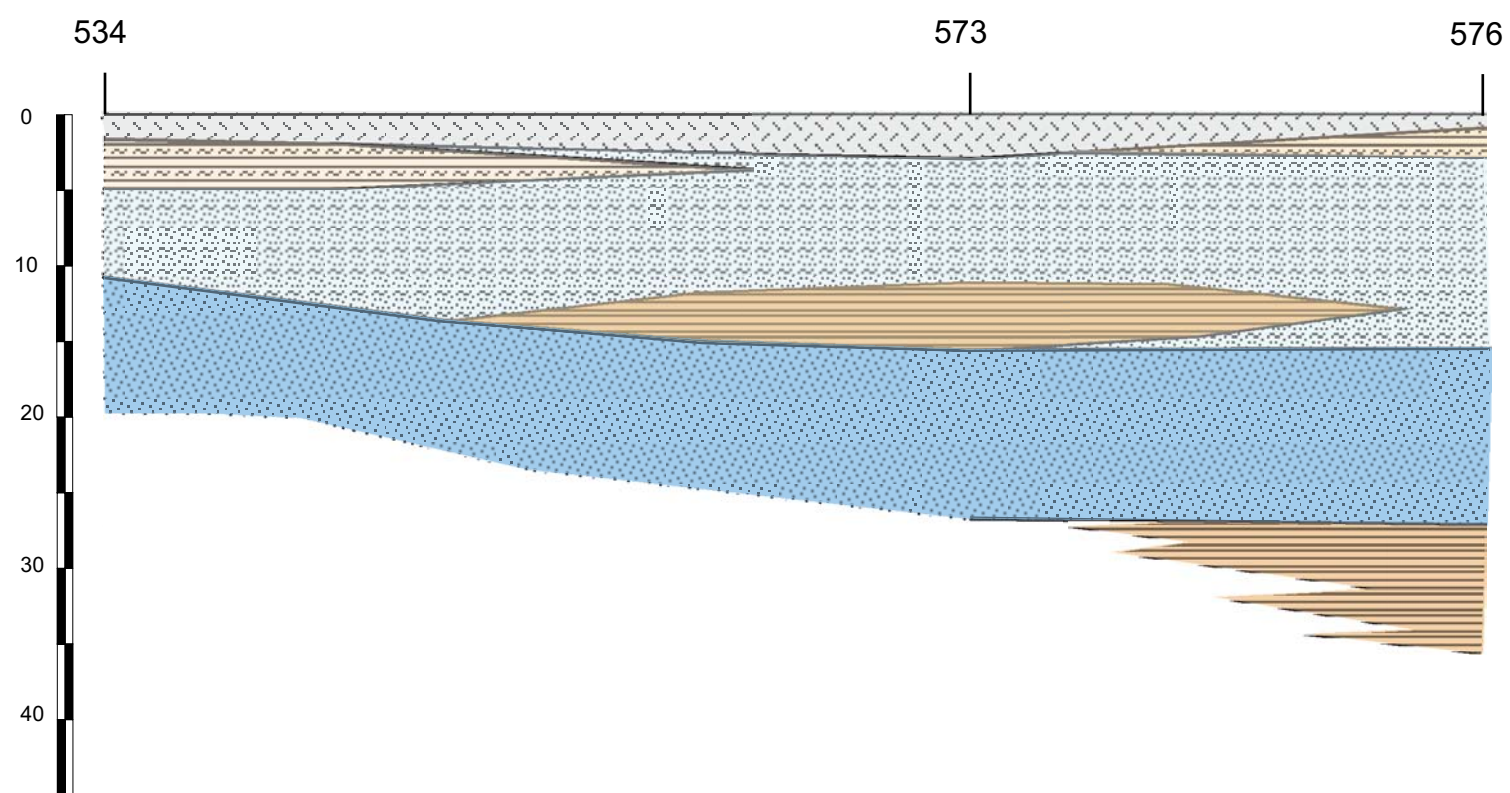
scala orizzontale 1:10.000  
scala verticale 1:500








SEZIONE STRATIGRAFICA INTERPRETATIVA

TRACCIA B-B

scala orizzontale 1:10.000  
scala verticale 1:500



-  Terreno vegetale o di riporto
-  Argilla con limo o sabbia
-  Sabbia debolmente limosa
-  Sabbia grigia
-  Argilla di vario colore

